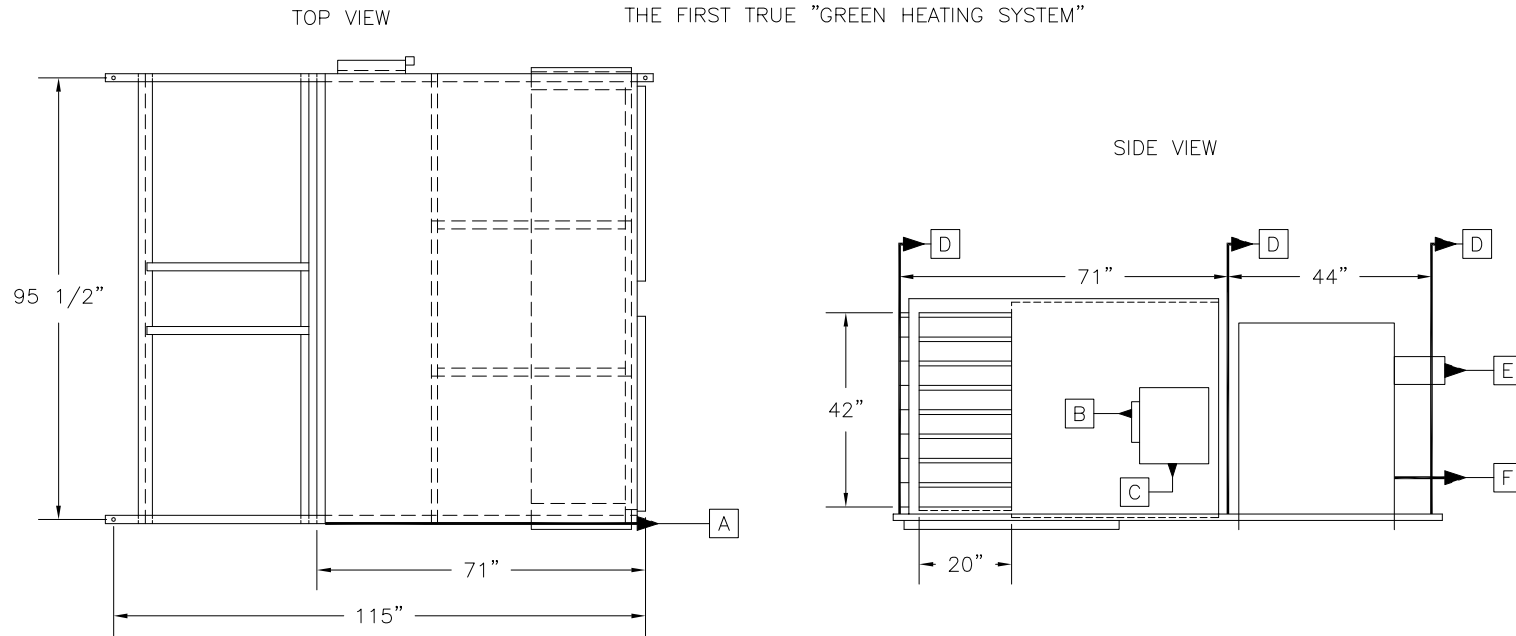


93% EFFICIENT
THE FIRST TRUE "GREEN HEATING SYSTEM"



- A) (6) 1/2" MOUNTING HOLES ON CENTER
- B) SERVICE SWITCH ELECTRICAL CONNECTION POINT
- C) 14"x16" CONTROL PANEL
- D) 3/8" ALL-THREAD HANGING ROD
- E) 6" FLUE VENT PIPE
- F) 3/4" INLET GAS CONNECTION
- NOTE-UNIT HEATER FLUE AND GAS CONNECTION WILL VARY WITH UNIT HEATER SIZE AND MFG (SEE ATTACHED SUBMITTAL)
- 1,700 LBS

| QTY | UNIT MODEL | 2/FAN | HP | AMPS | CFM | SONES | TRANS | VOLTS | F/DISC |
|-----|------------|-------|-----|------|--------|-------|-------|-------|--------|
| 1 | ER-242-800 | 115/1 | 3/4 | 28 | 33,000 | 12.6 | | | |

| QTY | U/MODEL | VOLTS | AMPS | BTU/INPUT | BTU/OUTPUT | FLUE | GAS/CON | G/PRE |
|-----|---------|-------|------|-----------|------------|------|---------|-------|
| 2 | LF 400 | 115/1 | 5 | 390,000 | 312,000 | 6" | 3/4" | 6" |