

# Case Study Report



## Project Identification

Customer: Springdale Buildings 2 & 3  
Location: Cincinnati, Ohio

## Design Specifications

Facility Warehouses: 207,000' x 36' High + 369,000 x 36' High  
Winter Operation 70° – 0°

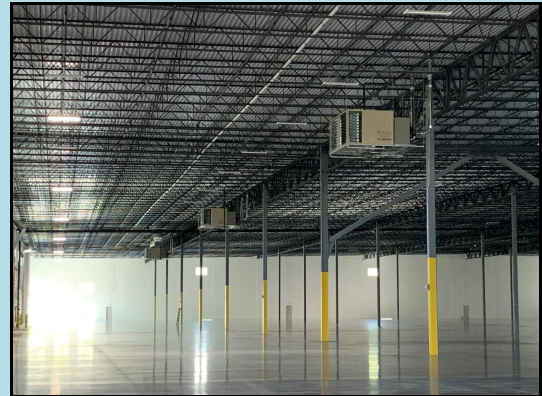


## Project Challenge:

Cushman & Wakefield developed (2) speculative distribution warehouses in Cincinnati, OH. They wanted these facilities to be able to accommodate a single tenant or multiple tenants, maintain 70°-0° in the winter and minimize utility usage while the buildings sit vacant.

## Equipment Solution:

Air Energy provided (11) ER-242-800s, (2) ER-142-400s and (7) Intake Hoods to heat the two warehouses. The equipment gives Cushman & Wakefield the ability to maintain 70° in both facilities and to divide the spaces between 1 or 4 tenants. **The Rack Units reduced Springdale warehouses vacant utility costs by \$.20/sqft compared to the ASHRAE standard.**



## Results of Rack System:

Springdale experienced Annual Savings totaling **\$109,580**:

- Electrical – 209,120 kWh at \$.10/kWh
- Natural Gas – 118,224 therms at \$.75/therm

**Carbon Footprint Reduction: 835 tons of CO2 emissions annually**