

# Case Study Report



## Project Identification

Customer: Metro Air Business Park – Building #6  
Location: Plainfield, Indiana

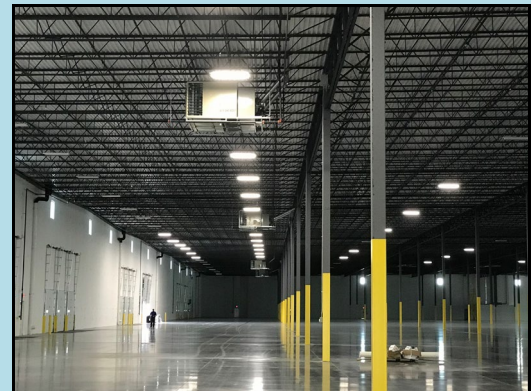


## Design Specifications

Facility Warehouse 383,500' x 36' High  
Winter Operation 70° – 0°

### Project Challenge:

Metro Air Business Park built a brand new 380,000' vacant facility. The baseline heating system called for 100% Outside Air Makeup Air Units, but Metro Air wanted a system that would be able to divide into (4) tenant spaces, maintain 70° in the heating season, provide 1.5 Air Turnovers for summer ventilation and qualify for an Energy Incentive.



### Equipment Solution:

Air Energy provided (10) ER-242-800s + (6) 24" x 24" Intake Hoods to heat and ventilate the facility. The (6) Intake Hoods meet ASHRAE 62.1 Indoor Air Quality Standards, as well as bring in cool air during summer nights to condition the space.

**Installing The Rack Units in their new facility, Metro Air saved \$.30/sqft in utility costs.**



### Results of Rack System:

Metro Air – Bldg 2 experienced Annual Savings totaling **\$114,800**:

- Electrical – 114,400 kWh at \$.10/kWh
- Natural Gas – 103,376 therms at \$.80/therm

Metro Air received verified Vectren Rebate:

- Vectren – Natural Gas: **\$100,000**